

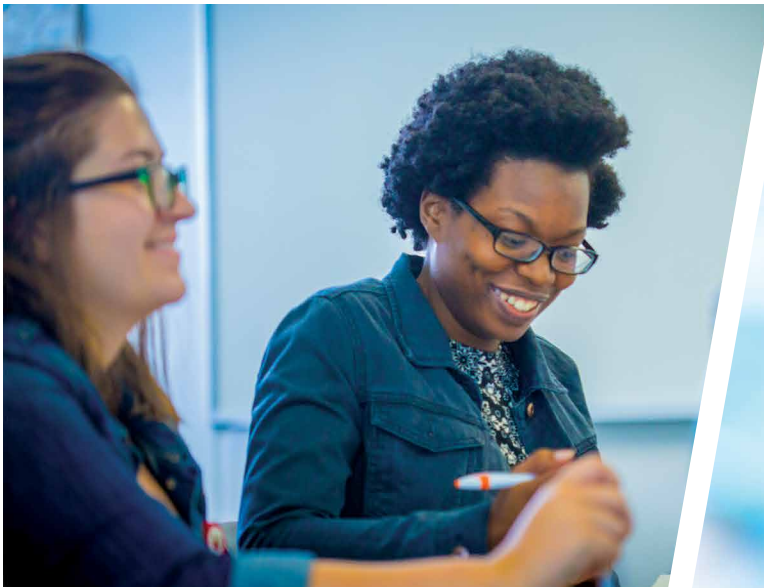


MARIAN UNIVERSITY
— Indianapolis —[®]

Office of Graduate and Online Admission

**This is what great
education degrees
are made of.**





Choose a university that helps you take your career to the next level.

As the only Catholic university in Indianapolis, Marian University believes in and practices values that students of all faiths, creeds, and nationalities appreciate. Values like embracing those with diverse perspectives, cultural backgrounds, and dreams. And making the world a better place through leadership and service—because that’s what we are made of.

Marian University’s College of Graduate and Online Programs offers a range of associate’s, bachelor’s, master’s, and doctoral degrees for students who want to develop exceptional professional skills.

As you think about the education you need to take your career to the next level, think about the student experience you need to grow, both personally and intellectually.

Think about a university where you’ll learn from and collaborate with instructors who provide you with valuable, real-world experience and insights. Think about a campus culture that is warm and welcoming. And the type of graduate or online program that’s a good fit for your lifestyle and career goals.

- At Marian University, you’re never alone. Our expert faculty guide and encourage you to stretch yourself and achieve more than you ever thought possible.
- Earning a degree at Marian isn’t easy. You’ll find a curriculum that is academically challenging. You’ll explore new ideas, work hard, and dig deep.
- Along the way, you’ll build lifelong relationships with mentors and peers who inspire you to reach new levels of professionalism—and you’ll learn how you can make a positive impact in your workplace and community.

Find out what we’re made of.

If you are ready to take your education and your career to the next level, contact us. Marian University offers challenging academic programs, but our faculty will support, guide, and encourage you every step of the way.

Marian students engage in high-impact, hands-on learning opportunities including internships and collaborative problem-solving with their peers, faculty, alumni, and leaders from the local community. When you graduate, you’ll be career-ready with the knowledge and leadership abilities you need to make a difference in your community.

Visit our historic, wooded campus located just minutes from the heart of downtown Indianapolis. Whether you’re interested in an online degree or a graduate degree, we’ll arrange for you to talk with advisors who will help you get started.

→ To talk with an admission counselor, email GRadmissions@marian.edu or call 317.955.6128. Let’s discuss your career goals, academic options, and develop a plan to make your dreams a reality.

If you know you are ready to take the next step, apply online for admission at marian.edu/applynow.

Educational Leadership

MASTER OF ARTS

Do you have a passion for improving the educational experience for students? If you want to make a positive impact on your community as an educator, researcher, policy-maker, or service-minded leader, consider our master's degree in educational leadership.

Offered through the Marian University Academy for Teaching and Learning Leadership, this degree is for licensed K-12 teachers and school counselors who want to pursue leadership positions as school principals, program directors, and administrators. An optional concentration in Catholic school education is available (see page 3).

This is a hybrid, two-year program during which you'll earn a master's degree and prepare for Building Level Administrator (BLA) licensure aligned with Indiana Department of Education (IDOE) standards.

Compared to other programs where the students in your classes may change each semester, our cohort model will benefit you because you'll be part of a tight-knit group that completes the entire program together. Through your cohort, you'll build strong personal relationships and a professional network that will last a lifetime.

During the first 12 months, you'll complete foundational coursework delivered through on-campus sessions and online modules, supplemental reading, and research. You'll engage in extensive collaboration with the peers in your cohort.

After completing required coursework, you'll begin the second year, in which you'll complete a directed elective, begin your internship, and start your master's research project or thesis.

➔ marian.edu/educationalleadership

FIRST YEAR

Fall

Adaptive Leadership
Systems Thinking
Culture for High-Performing Schools OR
Call and Culture of Catholic Schools
School Law and Management OR
Law and Management of Private Schools

Spring

Transformational Leadership
Teaching, Learning, and Talent Development
Family and Community Engagement

Summer

Leadership for Student Learning
Resource Allocation
Research Methods

CREDITS: 26

SECOND YEAR

Fall

Directed Elective
Master's Capstone Project/Thesis
Internship

Spring

Program Development and Evaluation
Finish Capstone Project/Thesis
Internship

CREDITS: 12

TOTAL MA CREDITS: 38

Admission Requirements

- Bachelor's degree from regionally accredited institution
- Licensed teacher or licensed school counselor in Indiana
- Undergraduate GPA of at least 3.00
- National criminal background check



“ I feel as if I'm leading change and making a difference in terms of student culture. Marian University has instilled in me a commitment to students in high-need schools and this experience is by far the most rewarding I have ever had.”

SUEANN GALT '15

Building Level Administrator

LICENSURE

NATIONALLY, THE EMPLOYMENT OUTLOOK FOR ELEMENTARY, MIDDLE, AND HIGH SCHOOL PRINCIPALS IS EXPECTED TO GROW BY SIX PERCENT BY 2024.*

This cohort-based program is ideal for licensed K-12 teachers who have a master's degree and want to expand their career options by working in school leadership positions as a principal, program director, or administrator.

Our hybrid, one-year program prepares you for Indiana licensure as a building level administrator.

Upon completion, you'll have the knowledge, skills, and experience to serve as a highly effective school leader.

The curriculum combines academic rigor, classroom sessions and online modules, supplemental reading, and extensive collaboration with your cohort peers.

You will complete the same foundational coursework as our Master of Arts in Educational Leadership students, but as a BLA licensure-only student you will not complete an internship or the master's research project/thesis.

→ marian.edu/BLA

FIRST YEAR

Fall

Adaptive Leadership
Systems Thinking
Culture for High-Performing Schools OR
Call and Culture of Catholic Schools
School Law and Management OR
Law and Management of Private Schools

Spring

Transformational Leadership
Teaching, Learning, and Talent Development
Family and Community Engagement

Summer

Leadership for Student Learning
Resource Allocation
Research Methods

TOTAL BLA CREDITS: 26

Admission Requirements

- Indiana K-12 teaching or school counselor license
- Master's degree in education or another field with a GPA of at least 3.00
- National criminal background check

Catholic School Education Concentration

As a student in the Master of Arts in Educational Leadership degree program or the licensure-only Building Level Administrator program, you can add an optional concentration in Catholic school education.

Last year, more than 15 percent of Catholic schools in the Indianapolis archdiocese had administrative openings for K-12 leaders. If you currently work in a Catholic school, or if you wish to pursue employment in a Catholic school setting, learn more about our program in Catholic school leadership.

- As a currently employed K-12 Catholic school teacher, when you enroll for our master's degree in educational leadership you may be eligible for scholarships that cover 25 percent of your tuition.
- Educators currently employed by Catholic schools owned and operated by the Archdiocese of Indianapolis, or its parishes, may also be eligible for additional scholarships through Marian University and the Archdiocese of Indianapolis.
- Apply for this additional funding through the Archdiocese of Indianapolis.

*Source: United States Department of Labor, Bureau of Labor Statistics.

Teacher Preparation

MASTER OF ARTS

The Master of Arts in Teaching, or MAT, degree at Marian University will establish you as a credible, well-prepared educator. Marian's MAT is designed for college graduates who have a bachelor's degree and who want to change careers in order to enter the teaching profession.

Our MAT is offered in three distinct formats:

1. **Master's Bridge to Teaching (MBT)**
2. **Online MAT program**
3. **Partnerships with Indianapolis Teaching Fellows (ITF) and Teach For America (TFA)**

Depending on your academic background and career goals, our faculty advisors will help you select the format that's right for you. In addition, you can also choose to add coursework to earn concentrations in these areas:

- Early childhood education
- Elementary education
- English as a second language
- Exceptional needs
- Secondary education

No matter which format you choose, our MAT curriculum will provide you with broad knowledge and deep insight into the practical, applied art of teaching. You will explore a range of instructional theories, concepts, methods, and styles. Courses include an emphasis on cultural diversity and teaching minority students.

➔ marian.edu/MAT



WAGES FOR PRESCHOOL AND KINDERGARTEN TEACHERS WITH A MASTER'S DEGREE WERE 43 PERCENT HIGHER THAN THOSE FOR TEACHERS WITH A BACHELOR'S DEGREE IN 2013.*



“ I wanted a career that would be conducive to being a good mother and ensuring my children would get a good education. I tried substitute teaching to see if I would actually like being a teacher first. I discovered that I was able to quickly develop relationships with students. And I realized that I was concerned not only about the education of my own children but the education of all children.”

TRAMAINE WILLIAMS

Master's Bridge to Teaching (MBT)

Marian University's MBT program is a pathway for college graduates who have a bachelor's degree in any field to change careers and become K-12 teachers.

- After completing the MBT, you will be prepared to pursue initial Indiana teaching licensure for elementary school teaching or secondary licensure in one or more subject areas for middle and high school students.
- Upon completion, you will graduate with a Master of Arts in Teaching degree.
- You will be prepared to teach all children in your classroom effectively, including those from language minority backgrounds.

Choose from two MBT tracks.

1. One-year program for full-time students: Classes begin each summer and culminate with graduation in May. Most classes and your internship are held Monday through Friday from 8 a.m. to 5 p.m.

2. Two-year program for part-time students: Classes begin each summer and fall. For the first 18 months, you can continue working full-time. Classes are typically held from 6 to 9 p.m. through the week with Saturday classes from 8 a.m. to 5 p.m. During your final semester, you must be a full-time student to complete your teaching internship, which will be held Monday through Friday from 7 a.m. to 4 p.m. (hours may vary depending on the school in which you are placed).

In some cases, you may be eligible for a Transition to Teaching permit from the Indiana Department of Education, which enables you to seek full-time employment as a teacher while completing the program.

➔ marian.edu/MBT

.....
HIGH SCHOOL TEACHERS WITH A MASTER'S DEGREE EARNED 24 PERCENT MORE THAN THOSE WITH A BACHELOR'S DEGREE IN 2013.*
.....

*Source: United States Department of Labor, Bureau of Labor Statistics.



ONE-YEAR PROGRAM

Summer

Second Language Learning
Principles and Problems of Education
Family and Teacher in Diverse/Inclusive Settings
Best Practices in Elementary/Language Arts and Social Studies OR Best Practices in Teaching and Learning
Assessment of Learning I

Fall

Child Development and Observation
Best Practices in Language Arts and Expressive Arts (Elementary and Secondary)
Best Practices in Content Areas (Secondary)
Exceptional Needs I
Internship
Classroom Research I

Spring

Best Practices in Elementary Mathematics and Science
Exceptional Needs II
Assessment of Learning II
Internship
Classroom Research II

TOTAL MA CREDITS: 36

Admission Requirements

- Bachelor's degree from regionally accredited institution
- Undergraduate GPA of at least 2.75
- Indiana Core Academic Skills Assessment (CASA); go to in.nesinc.com for details
- National criminal background check

Teacher Preparation

MASTER OF ARTS

Online MAT

Our convenient online MAT degree is designed for adult students who want to change careers and become elementary education, secondary science education, or exceptional needs K-12 teachers.

Because all courses are delivered online, you can complete your assignments and coursework at times that best fit your schedule. You must have already earned a bachelor's degree to be eligible for this program, but your degree does not have to be in education.

- If you want to teach in an elementary school setting, we will evaluate your application to determine whether you have broad knowledge in content areas like mathematics, science, technology, engineering, English, or the humanities.
- If you want to teach at the secondary level, your application will be evaluated to determine whether you have completed needed courses in the content area(s) in which you want to teach.

Depending on your academic credentials, professional background, and career goals—and in consultation with one of our faculty—you can choose from two MAT online formats:

- Complete the 36-credit program and earn a Master of Arts in Teaching degree.
- Complete 18-24 hours of licensure-only classes.

Either format can be completed within 18 to 24 months. You can continue working full-time and take classes part-time until it is time to begin the required teaching internship during your last semester.

- During your internship, you will complete at least 540 hours working in a local school. You'll be supervised by a master teacher and a university faculty member.
- Alternatively, if you're working as a full-time teacher in a K-12 school with a temporary permit, you will work under the supervision of a Marian University faculty member for one full semester.
- A full-time commitment Monday through Friday from 7 a.m. to 4 p.m. is required for your teaching internship. Hours may vary depending on the school in which you are placed.

➔ marian.edu/onlineMAT

Admission Requirements

- Bachelor's degree from regionally accredited institution
- Undergraduate GPA of at least 3.00 or a GPA of 2.50 with five years of professional experience
- Indiana Core Academic Skills Assessment (CASA); go to in.nesinc.com for details
- National criminal background check

Indianapolis Teaching Fellows (ITF) and Teach For America (TFA)

This two-year program provides you with the coursework, guidance, mentoring, and hands-on teaching experience to become a teacher. Students in this track come to Marian University through one of our two program partners.

- Indianapolis Teaching Fellows (ITF) is affiliated with The New Teacher Project (TNTP), whose mission is to ensure low-income students in high-need schools have access to effective teachers. If accepted, you'll learn the fundamentals of teaching, mastering critical skills by practicing in real classrooms with real students. You'll get intensive classroom experience, expert coaching from master teachers, and personalized training. Learn more at tntp.org/Indianapolis.

- Teach For America (TFA) recruits remarkable, diverse individuals who are not traditionally trained teachers and who want to teach in low-income communities. In exchange for committing to teach for two years, TFA corps members are hired by partner public schools. For information, visit indianapolis.teachforamerica.org.

Over the course of your studies, you will complete a six-semester, structured curriculum focused on increasing teaching knowledge, developing instructional strategies, building classroom management techniques, and acquiring related skills for success.

➔ marian.edu/partnerMAT

Transition to Teaching

LICENSURE

CONTINUED GROWTH AT A RATE OF SIX TO SEVEN PERCENT IS EXPECTED FOR TEACHERS OF ALL TYPES THROUGH 2024, WITH THE LARGEST GROWTH AT THE KINDERGARTEN AND ELEMENTARY LEVELS, FOLLOWED BY HIGH SCHOOL TEACHERS, MIDDLE SCHOOL TEACHERS, AND SPECIAL EDUCATION TEACHERS.*

If you are a college graduate in a career that isn't as personally rewarding or meaningful as you might wish, consider transitioning to teaching (T2T).

Marian University's T2T program is a good choice if you have a bachelor's degree and you want to change careers to enter the teaching profession.

- This accelerated, licensure-only program builds on subject matter knowledge you already possess.
- If admitted, you won't earn an education degree. Instead, you'll complete courses and internship experiences that prepare you to pursue initial Indiana teaching licensure.

You can complete one, two, or more classes a semester, customizing your course load to fit your schedule. Evening and weekend classes are available. This flexible program can be completed in about 18 months.

Depending on whether you want to work in early childhood education, elementary education, secondary education, or special education classrooms or teach English as a new language, you'll complete 18 to 24 hours of courses. You'll also complete a required (unpaid) teaching internship during your last semester.

You may be able to obtain a paid teaching position before completing program requirements. The Indiana Department of Education offers both T2T and emergency permits for teacher candidates with content knowledge in specific content areas.

→ marian.edu/T2T

THE TRANSITION TO
TEACHING PROGRAM IS
AVAILABLE ON-CAMPUS
OR ONLINE.



Admission Requirements

- Bachelor's degree from regionally accredited institution
- Undergraduate GPA of at least 3.00 or a GPA of 2.50 with five years of professional experience
- Indiana Core Academic Skills Assessment (CASA); go to in.nesinc.com for details
- National criminal background check

Special Education

MASTER OF ARTS

The master's degree in special education offers in-depth coursework in teaching students with exceptional needs.

Licensed special education teachers work in public and private schools at the elementary, middle, and high school levels. Others may work as tutors, teachers, department chairs, administrators, or educational consultants at nonprofit and social service agencies, mental health facilities, and therapeutic residential facilities.

While many teachers complete special education courses as part of their undergraduate studies, by earning an advanced degree in special education, you will have a focused skill set to achieve positive outcomes for students with exceptional needs in PreK-12 school settings.

Our curriculum is designed for educators called to work with children, teens, and young adults with high-incidence disabilities.

- Learn best practices and developments for working with children, teens, and young adults who require special educational interventions and accommodations to help them succeed academically.
- Explore teaching methodologies for youth with a wide range of mild to moderate challenges.
- Gain experience investigating and implementing evidence-based individualized instruction strategies.
- Help students improve important skills, such as communication and social skills.

You'll complete 36 credit hours of coursework, which can be completed in two years for full-time students or three years for part-time students (including summer sessions).

Among the subjects you'll study:

- Methods and program management for exceptional needs children
- Legal aspects and current issues in special education
- Applied behavior analysis and behavior intervention
- Language and mathematics methods in special education
- Instruction with assistive technology

Upon completion, you'll be prepared to add an Exceptional Needs—Mild Intervention license for the PreK-12 grades. With this license, you'll have a knowledge base of Tier Two and Tier Three interventions in reading, math, written expression, and behavior intervention across the spectrum of mild-intervention disabilities.

➔ marian.edu/specialeducation

PROGRAM REQUIREMENTS

Required Courses

Assessment of Children with Exceptional Needs
Exceptional Needs: Methods and Program Management
Legal Aspects and Current Issues in Special Education
Exceptional Needs: Collaborative Consultation
Literacy Assessment and Instruction for Special Needs Learners

One Course From

Teaching Reading PreK-Elementary
Methods for Transition and Career Assessment

Four Courses From

Language Methods in Special Education
Mathematics Methods in Special Education
Internship in Special Education
Instruction with Assistive Technology
Applied Behavior Programming in Special Education

One Course From

Capstone in Special Education
Research in Special Education

TOTAL MA CREDITS: 36

Students may be required to complete prerequisites to the program. Students who are not required to take prerequisites will need three elective hours to reach the minimum requirement of 36 hours.

Admission Requirements

- Bachelor's degree from regionally accredited institution
- Undergraduate GPA of at least 3.00
- Indiana Core Academic Skills Assessment (CASA); go to in.nesinc.com for details
- National criminal background check

Special Education Prep

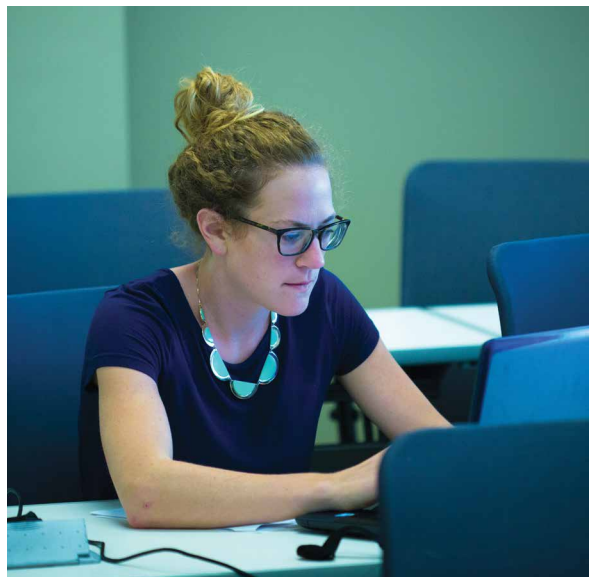
LICENSURE

Our 15-month, non-degree, non-credit Special Education Prep program (SPED Prep) provides an Indiana Department of Education-approved online curriculum for highly qualified educators, like instructional aides and others, to learn outstanding behavioral, literacy, and numeracy intervention skills. Upon completion, students will be prepared for P-12 Exceptional Needs—Mild Intervention teacher licensure.

Take advantage of our innovative teacher-training model, online and onsite, through residency and clinical work. Enjoy the flexibility of completing the modules while maintaining your current position. Marian University's Fred S. Klipsch Educators College retains experts in the schools as instructors to guide you through the program, so you're prepared to pass successfully Indiana's licensure requirements.

As part of the curriculum, you will complete 20 modules (online and onsite), three phases of clinical field work, and take the Indiana Core Academic Skills Assessment (CASA) test. As you progress through the SPED Prep program, you're also required to pass the Praxis ParaPro Test, Indiana Core P-12 Educator Assessment, Indiana Core Exceptional Needs—Mild Intervention Assessment, and Indiana Core Exceptional Needs—Reading Assessments. And we're here helping and supporting you along the way.

➔ **To learn more, contact Dr. Cindy Farren at cfarren@marian.edu or 317.955.6796.**



SAMPLE SPED PREP MODULES INCLUDE:

- Foundations of Special Education
- Developmental Theories
- Culturally Responsive Practice
- Literacy such as the Orton-Gillingham Reading Intervention Program
- Applied Behavior Analysis
- Student Centered Practice – Literacy/Numeracy

Eligibility Requirements*

- Bachelor's degree from regionally accredited institution
- Score no higher than 799 on the math, reading, or language section of the TABE test
- Agree to participate in literacy and numeracy skill building activities

*subject to change



Learn more about our graduate and online programs.

ASSOCIATE DEGREES

Business Administration *
Paralegal Studies *

BACHELOR'S DEGREES

Accelerated Nursing Campus
Accelerated Nursing Online –
St. Thomas in Nashville ^
Accelerated Nursing Online –
St. Vincent in Indianapolis ^
Business Administration *
Health and Human Services *
RN to BSN *

MASTER'S DEGREES

Biomedical Sciences –
Medical/Professional
Biomedical Sciences – Research
Bridge to Teaching
Counseling – Clinical Mental Health
Counseling – School
Educational Leadership – Catholic ^
Educational Leadership ^
MAT Online *
Nursing – Education
Pastoral Ministry
Special Education

DOCTORAL DEGREES

Nursing Practice –
Family Nurse Practitioner
Nursing Practice – Nurse Anesthesia
Osteopathic Medicine

LICENSURE PROGRAMS

Building Level Administrators ^
Special Education Prep *
Transition to Teaching
Transition to Teaching Online *

NON-DEGREE COURSES

Non-Degree Classes – Graduate
Nursing Prerequisites – Undergraduate

PARTNER PROGRAMS

Indianapolis Public Schools
Teach For America
The New Teacher Project

Accreditation

Marian University's respected, innovative programs are accredited by the Higher Learning Commission (HLC) of the North Central Association of Colleges and Schools.

* Online program | ^ Hybrid program

MARIAN UNIVERSITY Indianapolis

Office of Graduate and Online Admission
3200 Cold Spring Road
Indianapolis, IN 46222-1997

FIND OUT WHAT WE'RE MADE OF!

Contact us: GRadmissions@marian.edu or 317.955.6128
Apply online: marian.edu/applynow



Marian University is sponsored by the Sisters of St. Francis, Oldenburg, Indiana.

Marian University does not discriminate on the basis of race, ethnicity, color, sex, gender, sexual orientation, religion, creed, national origin, age, or disabilities in the recruiting and selection of students for admission.

SEP. 2018

4,000+

FULL- AND PART-TIME STUDENTS
FROM THE UNITED STATES AND COUNTRIES
AROUND THE WORLD



This is Marian University: a distinguished university offering more than 50 degree programs from mathematics to music to medicine. We are small enough to give you the individual attention you deserve—and connected enough to help you get where you want to go.

Value

U.S. News & World Report ranked Marian University #24 in Best Value Schools among Midwest regional universities in 2019.